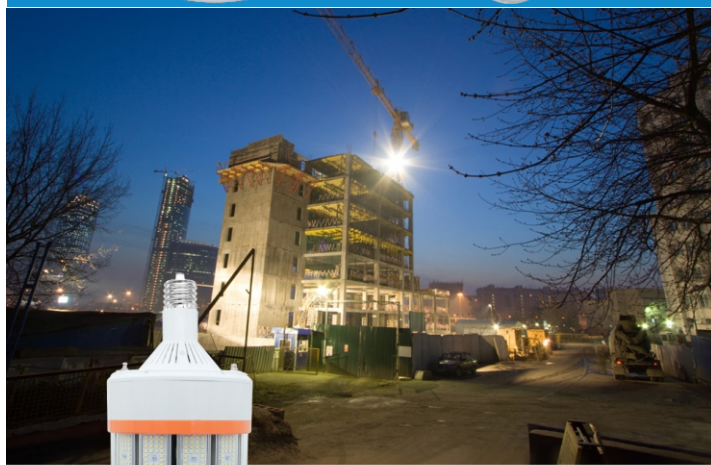




## LED Corn Light Series

420W AC100-277V/480V



High Watt LED Lighting

420W 70000LM



### Features Description

1. **Replace 1000W HID**
2. 360-degree beam angle, using aluminum profile riveting and stamping aluminum combination to speed up heat dissipation;
3. Sturdy and durable plastic component structure, embedded copper column nut fixed hook, with lanyard kit, Improve the safety when using lamps;
4. Isolated constant current power supply, 6000V surge protection circuit to avoid the product being damaged by surge current;
5. Use two sets of high performance fans to ensure the rated life of the lamp;
6. Long life span, more than 50,000 hours, reducing the times of replacements, saving time, money and energy;
7. Under the Same output luminous flux circumstances, save 60% -65% of electrical energy and reduce energy costs than HID;
8. Working ambient temperature rating is -25°C to 50°C;
9. Suitable for indoor open and closed fixtures; easy to install, a good replacement for traditional HID, MH and HPS.

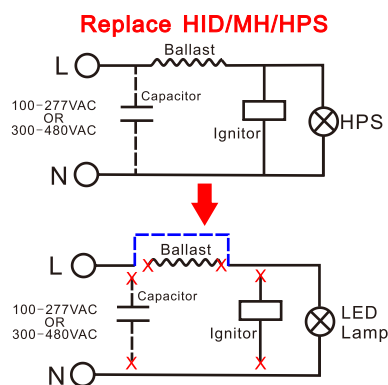
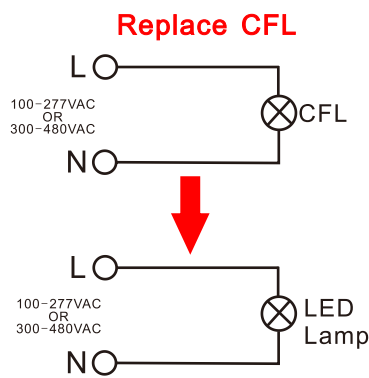
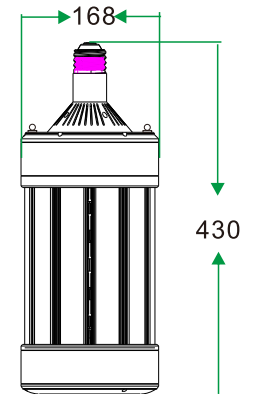
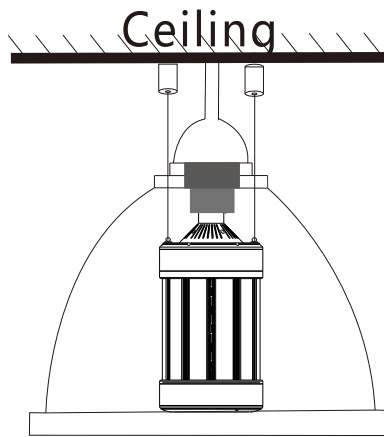
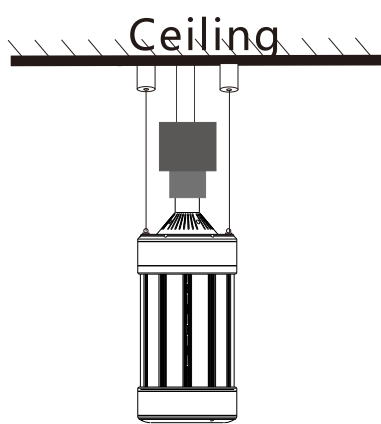
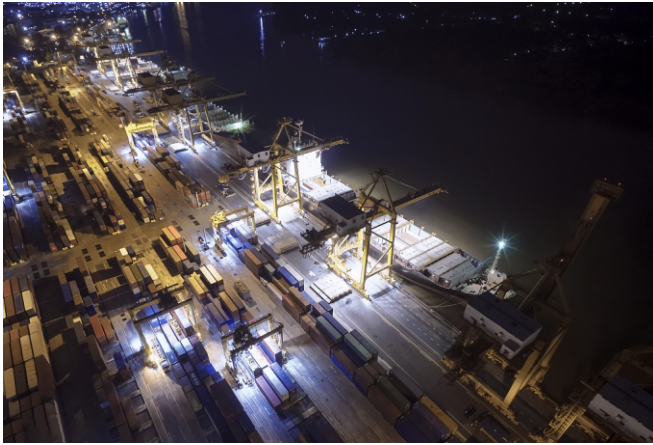
### Applications

- ⊙ High bay
- ⊙ Jobsite

Model	Input Voltage	Power	Lumens (LM)	Lamp Size	Weight
NS-ACL420W-02C	AC100-277V 50/60Hz	420W	70000LM	φ168*430 mm φ6,6*17 in	3.3kg
NS-ACL420W-02CH	AC300-480V 50/60Hz	420W	70000LM		



# LED Corn Light Series



Packing list	
Finished product lamp	1pcs
instructions	1pcs
lifting hook	2pcs
lifting rope	2pcs

## Installation Notes

- ! This LED is not intended for using with emergency exit fixtures or emergency lights, do not use with dimmers.
- ! Never repair the lamp by yourself, it should be repaired by professional person or maintenance center, otherwise it risks the chance of damage.
- ! Protect the lamp from dust and dirt, clean with soft cloth only, do not use chemical cleaners.
- ! Use only on 100-277VAC or 300-480VAC, 50-60Hz circuits, do not use with HID ballast.
- ! Power supply must be turned off before installing or servicing.

## Warranty description

**The following circumstances are not under warranty:**

- ◆ Instructions or invoice can not be provided.
- ◆ Accidental or misuse causing damage.
- ◆ Modification or repairs without our company's permission.
- ◆ Expiry of the warranty period, it can be used after reparation.