

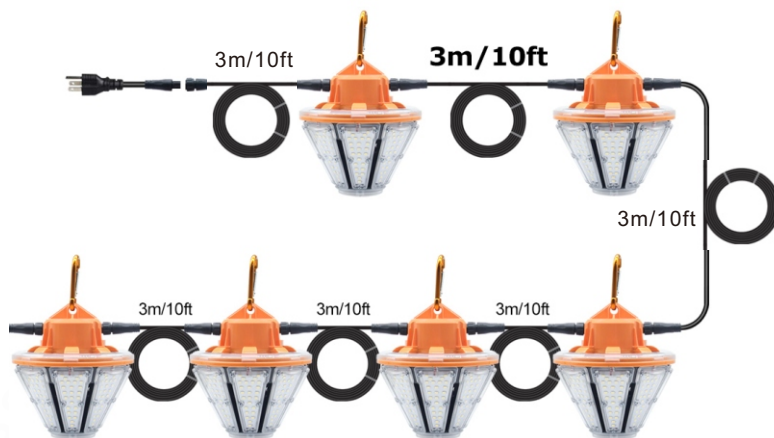
Product datasheet

60W LED Work String Light

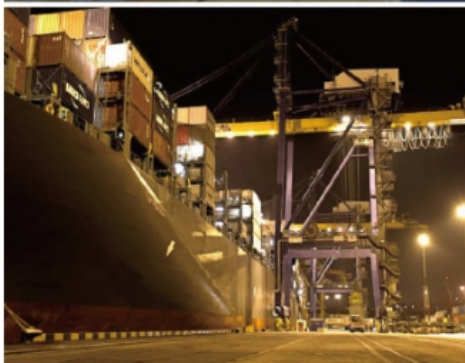
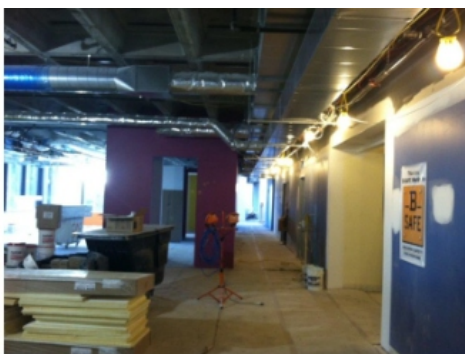
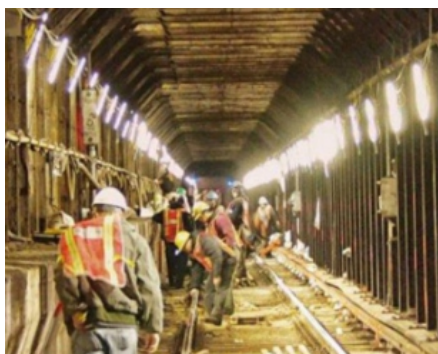
NS-TWL60W-01-T



Connectable Up to 6 Units



Applications



Features

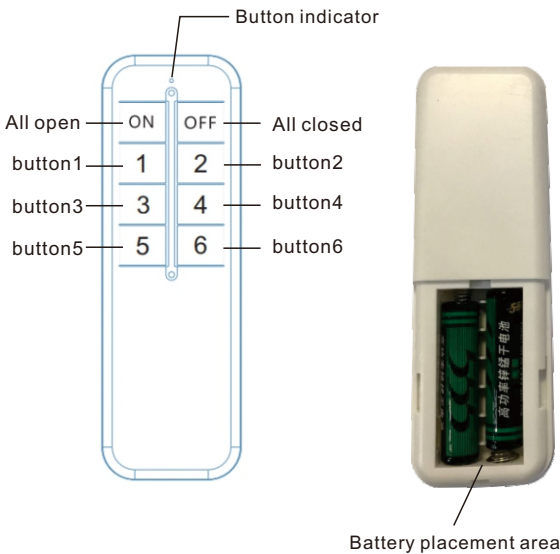
- 360-degree luminescence,adopt efficient ADC12 die-cast aluminum plus surface treatment to accelerate heat dissipation.
- Wide pressure isolating constant current power supply,Adopt 2.4G remote control, 360-degree omni-directional operation, remote control distance.
- Portable hooks are convenient, flexible and easy to operate.
- Provide socket connector, which can connect 6 lamps in series at the same time.
- Suitable for outdoor wet or humid places. IP65 waterproof rating.
- The luminaire can be controlled by the remote control.
One remote control can match 6 illuminators at the same time, and the remote control distance is up to 30 meters.



Parameter

| Model | Power | Lumens (LM) | Voltage | Base | CCT(K) | Dim. | CRI | SMD | Weight | IP rate |
|----------------|-------|---------------|------------|---------|------------|----------------------------|-----|------|--------|---------|
| NS-TWL60W-01-T | 60W | 8400LM ±5% | AC100-277V | Pothook | 2500-7000K | φ141*156 mm φ5,5*6,1 in | >80 | 2835 | 1.1Kg | Ip65 |

Functions and parameters of remote control



| Project | Parameter |
|-------------------------|---------------------------------------|
| Operating Voltage | 3-3.6v (Two 1.5V AAA battery powered) |
| Transmitting frequency | 2400-2483.5MHz |
| Modulation | GFSK |
| Transmit power | 6dBm |
| stand-by current | MAX 5uA |
| Working current | MAX 26uA |
| Remote control distance | 30m |
| physical dimension | 117*38*15mm |

Product datasheet

Remote operation instructions

1.Coded function

- If the LED lamp is already paired, it cannot be paired again and needs to clear the code first.
- For the coded process: Firstly, turn off the AC power of the LED lamp for more than 10 seconds, then power on the LED lamp, and press 3 times one of the digital keys of the RC(remote Control) in rapid succession within 3 seconds, (For example, if you want to assign it to button1, then press button1), you will see the LED lamp flashes 3 times, which indicates it's has been coded successfully, and the lamp has been assigned to button1. The coding process is same to other buttons.
- Note: One digital key can be paired with only one LED lamp.

2.Code Cleared function

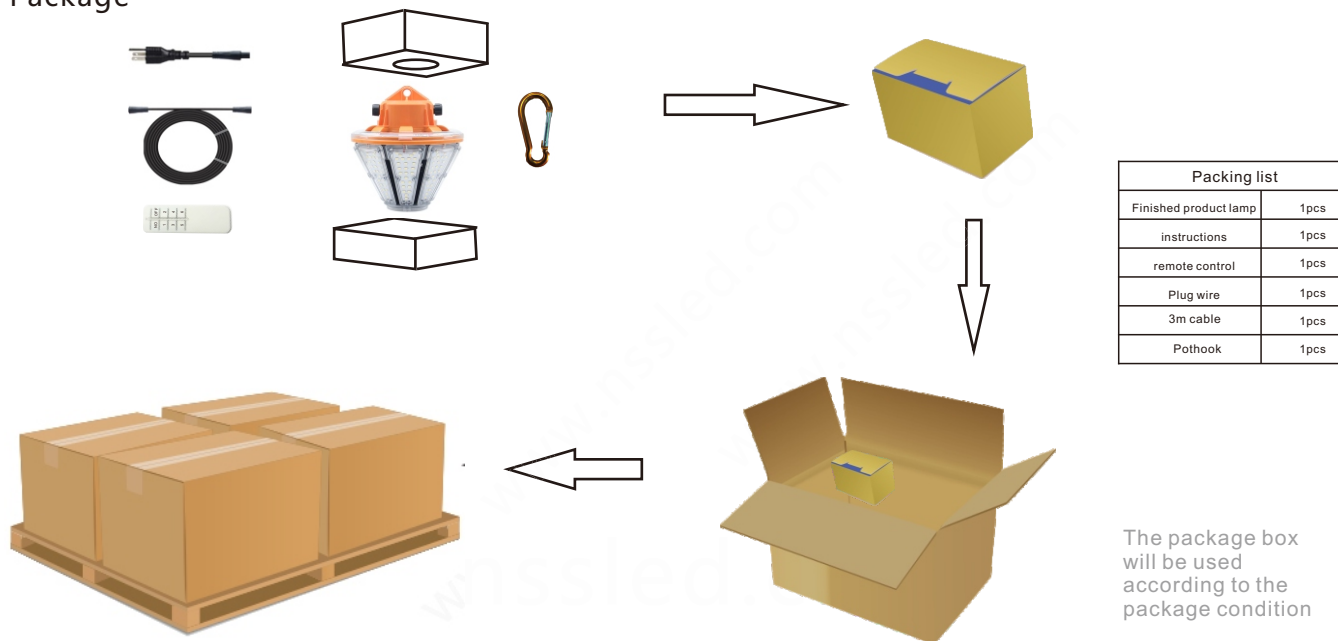
- Firstly, turn off the AC power of the LED fixture for more than 10 seconds, then power on the LED lamp, and quickly press 3 times one of the digital keys of the RC continuously within 3 seconds (if the lamp has already been paired with button1, you need to press other buttons than button1), you will see the LED light flashes 6 times, indicating that the LED lamp has been cleared successfully, and the clearing of other buttons are same.

3.Group Lamps and a single lamp control functions

- A single lamp control: If the lamp has been paired with button2, press button2 to Switch on and off the lamp;
Groups controlled: Use button ON and OFF to control the whole group LED lamps.

Logistical Data

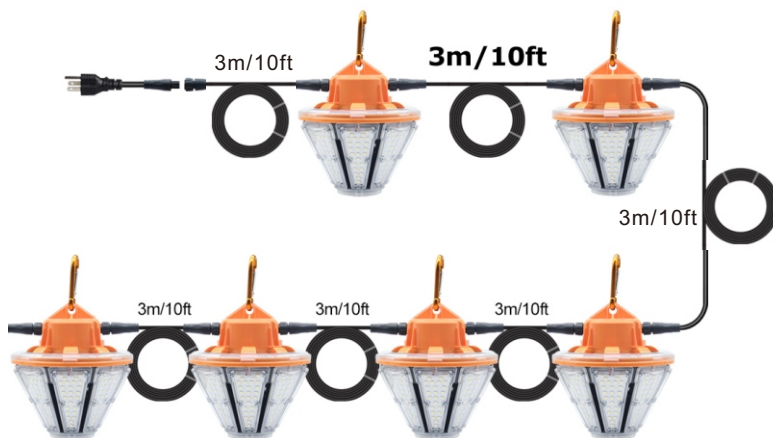
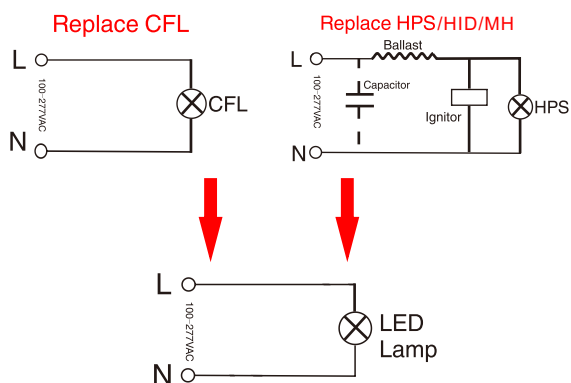
Package



| Model | Packaging unit (Pieces/Unit) | Dimensions | Gross weight | Volume |
|----------------|---------------------------------|----------------|--------------|---------------------|
| NS-TWL60W-01-T | Small box 1 | 22*17*22cm | 1.2Kg | 0.008m ³ |
| | Outer Carton 12 | 52.5*45.5*47cm | 15.5Kg | 0.11m ³ |

Product datasheet

Installation



- * which can connect 6 lamps in series at the same time.
- * The standard length of the connecting wire is 3 meters. (can be extended length) upon request.
- * 1 remote control can be used with 6 LED fixtures.
- * In order to avoid confusion, the lamps and remote controls in a single box are paired with the No. 1 button by default before leaving the factory.



60W LED Work String Light

60W

=



HPS/HID/MH

200W



Pothook

PC

PC

ADC12 die-cast aluminum

Material

Additional product data

All technical parameters apply to the entire lamp/Due to the complex production process for light-emitting diodes, the typical values shown for the technical LED parameters are purely statistical values that do not necessarily match the actual technical parameters of each individual product, which can vary from the typical value.

Disclaimer

Subject to change without notice. Errors and omission excepted. Always make sure to use the most recent release.