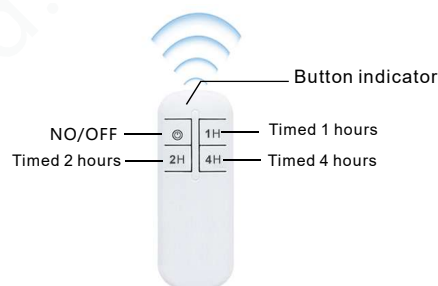


Product datasheet

TWL80-03-UCR

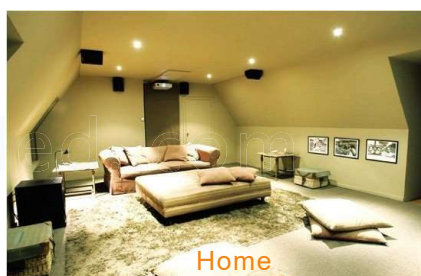
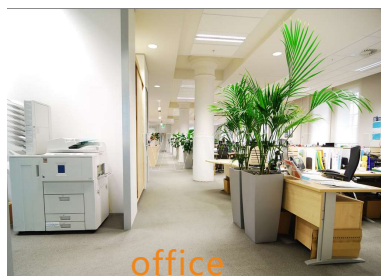
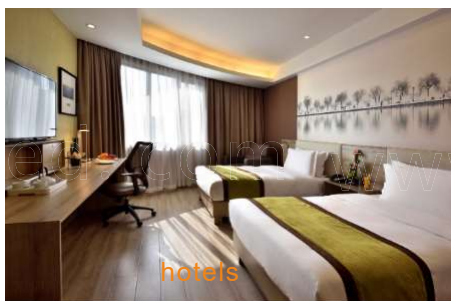
LED UV germicidal lamp



Features

- 1. 360 degree uv sterilization, disinfection, mites, no pollution.
- 2. Adopt 2.4G remote control, 360-degree omni-directional operation, remote control distance.
- 3. Intelligent control with built-in radar sensor, 30 seconds delay is enabled.
- 4. Portable hooks are convenient, flexible and easy to operate.
- 5. 10000 hours service life, switching times can reach more than 50000 times, reliable quality.
- 6. Applicable to shopping malls, supermarkets, offices, hospitals, schools, bars, factories, hotels, homes and other public areas.

Applications





Product datasheet

Technical data

Electrical data

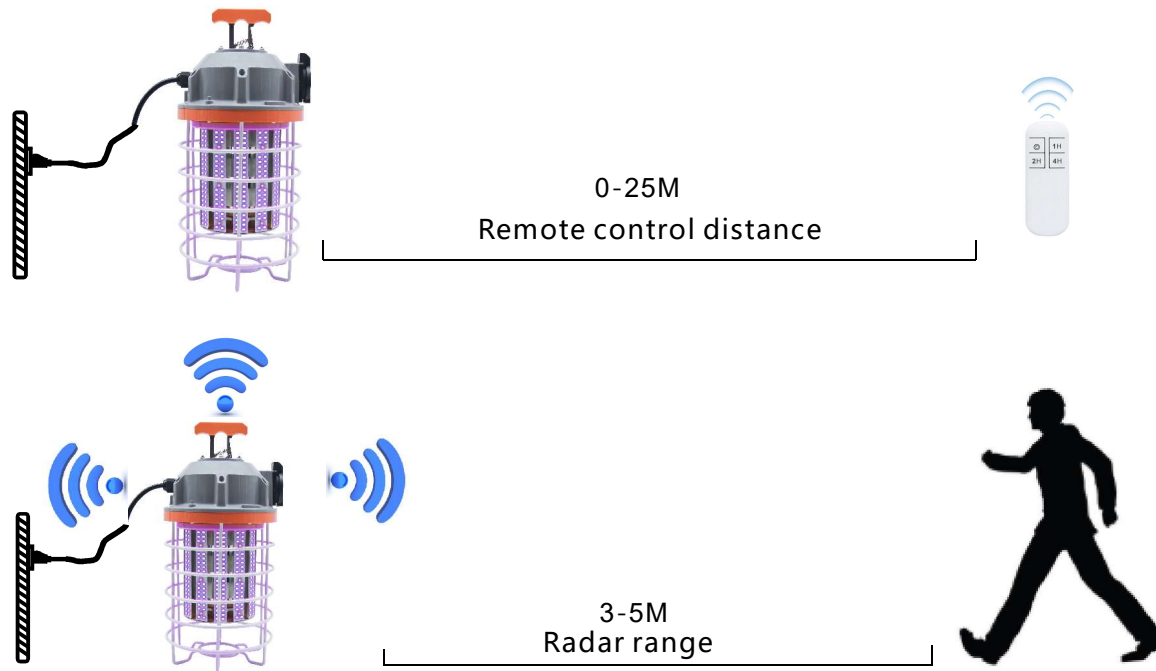
Rated wattage	80-85w
Input Voltage	100-277V AC
Operating frequency	50/60 Hz
Rated power factory	> 0.90
Power Efficiency	> 0.87
Humidity	< 90%
Ambient temperature	-40~45°C
Remote control distance	0-25M
Remote control timing	1H/2H/4H
Radar range	3-5M
Induction delay time	30S

Light technical data

Average life span	10000hrs
Switch frequency	50000 times
Recommended use of space	40-80m ²

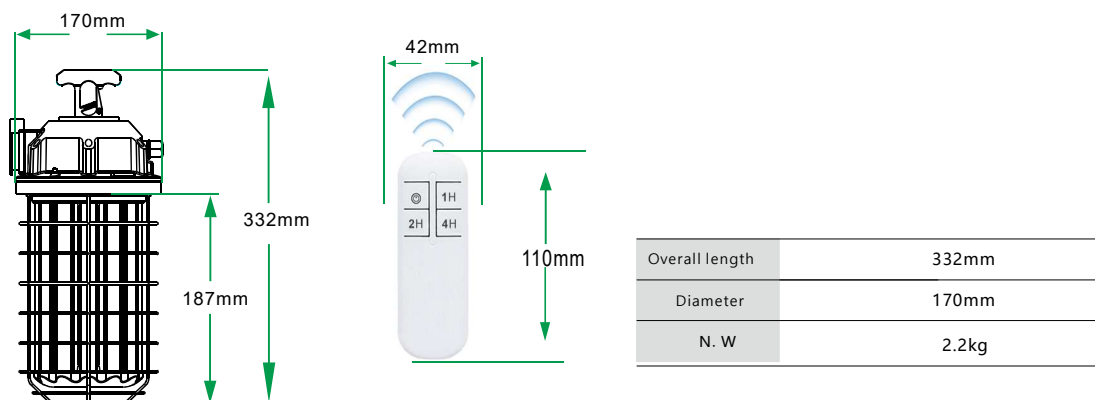
Product datasheet

Directions for use



- 1.After electrification, the lamp is temporarily unlit, and people and animals should be away from more than 5M.
- 2.The lamp will be automatically lit after 30 seconds without any human or animal within 5 meters of induction.
- 3.If timing setting is required, press any button of 1H/2H/4H on the remote control to select the timing time after the lamp is energized, and then the lamp will be automatically lit after people and animals leave for more than 5M for 30 seconds. When the time is set, the lamp will automatically go out after the time is set.
- 4.If the lamp needs to be turned OFF halfway, press the NO/OFF button on the remote control to turn OFF the lamp.
- 5.For example, when the lamp is working, the lamp will automatically go out when people and animals are close to the lamp for 3-5m.

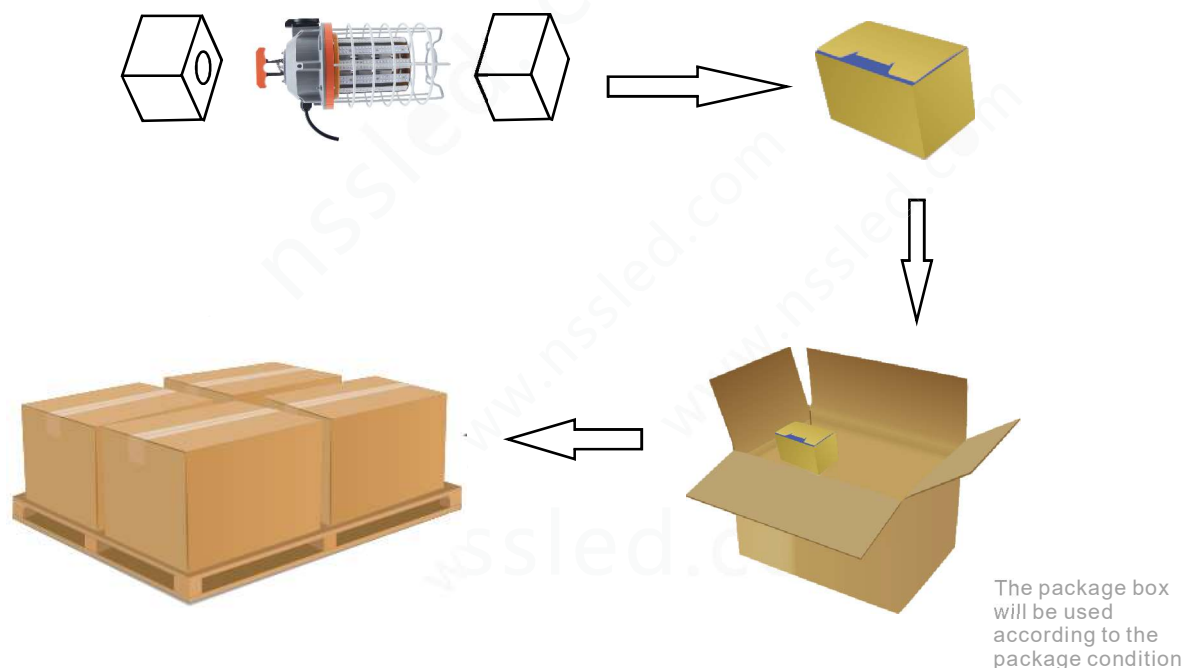
Dimensions & weight



Product datasheet

Logistical Data

Package



Packaging unit (Pieces/Unit)	Dimensions	Gross weight	Volume
Small box 1	37*21.5*22cm	2.4Kg	0.018m ³
Outer Carton 4	38.5*44.5*46cm	12Kg	0.079m ³

Additional product data

All technical parameters apply to the entire lamp/Due to the complex production process for light-emitting diodes, the typical values shown for the technical LED parameters are purely statistical values that do not necessarily match the actual technical parameters of each individual product, which can vary from the typical value.

Disclaimer

Subject to change without notice. Errors and omission excepted. Always make sure to use the most recent release.