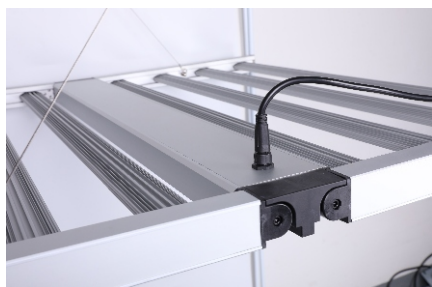


LED Grow Light

NSFO-GL320-D ,NSFO-GL600-D
NSFO-GL800-D



Manual regulation
(PWM/0-10V Optional)



Features Description

- ◆ 1. Specially designed for greenhouse and high-shed indoor plant lighting fixtures.
- ◆ 2. Slim appearance, surface treatment anti-corrosion, pressure resistance and crack resistance.
- ◆ 3. With a variety of different installation accessories, you can quickly and easily install to suit your space.
- ◆ 4. The aluminum profile is used for heat dissipation as a whole, and the heat dissipation effect is good; Foldable to reduce volume.
- ◆ 5. Long life-50,000 hours, dimmable.
- ◆ 6. Using matching plant full spectrum, high color rendering index to restore the true color of the object, low light attenuation.
- ◆ 7. Widely used in greenhouse cultivation, gardening, fruit and vegetable greenhouses, plant landscape and other fields.

Applications



Wide voltage input,
high efficiency power supply



Al6063 material, surface sandblasting
and oxidation process, anti-rust and
anti-corrosion.



High brightness SMD 3030 chip
Surface AB glue filling and sealing



Technical parameters

SPECIFICATION		NSFO-GL320-D		NSFO-GL600-D		NSFO-GL800-D	
ELECTRICAL SPECIFICATIONS	Input Voltage (V)	AC100-277V,50/60Hz					
	Power Factor	120V@0.98,277V@0.9					
	Power Watts(W)	320W		600W		800W	
	Dimming Availability	Manual dimming(PWM/0-10V Optional)					
	THD	<20%					
	Efficiency	≥90%					
PHOTOMETRIC INFORMATION	Lumens Delivered (lm)	41600LM±5%		78000LM±5%		104000LM±5%	
	Color Rendering Index (CRI)	>80					
	Spectrum	Full spectrum(3000K+6500K+660nm)					
	Light Type	SMD 3030					
	Beam Angle	120°					
	Number of light bars and lamp beads	3000K 6500K 660nm	168pcsX6 18pcsX6 8pcsX6	3000K 6500K 660nm			
GENERAL PERFORMANCE	IP Grade	IP 65					
	Material	Al16063 aluminum					
	Lamp Size	L570*W546*H84 mm L22.4**W21.5**H 3.3”		L1109*W1079*H98 mm L43.6**W42.5**H 3.8”			
	Fixture Weight	4.8Kg(10.56lbs)		12Kg(19.1lbs)			
	Storage temperature	-20 °C - 55 °C (-4 °F to 131 °F)					
	Operating Temperature	-20 °C - 45 °C (-4 °F to 113 °F)					
	Environment Humidity	40% ~ 90% RH, non condensing					
	Certication	CE,ROHS					
	Life Span	>30,000 hours (Luminance decrease is less than 30%)					

Size chart & Light Distribution

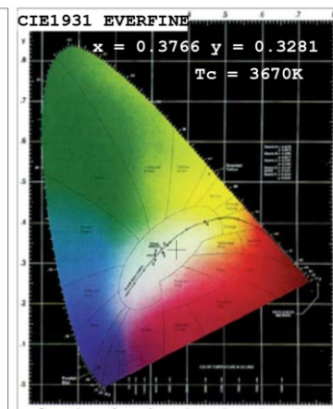
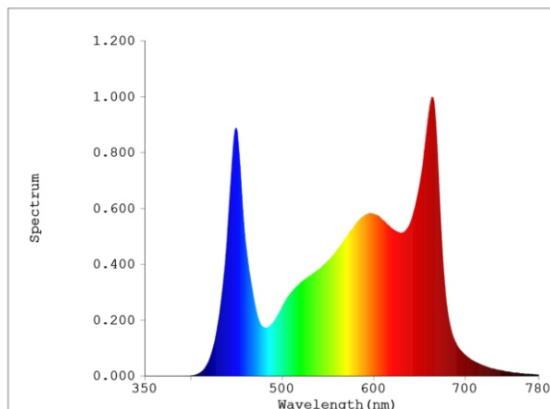
320/600/800 watt LED Grow Light with a full spectrum, emphasizing the Blue and Red wavelengths. Generally, this light can replace up to a 800/1500 /2000 watt HPS lamp.

Power	320W	600W	800W
PPF	817 μmol/s	1562 μmol/s	1772 μmol/s
Efficiency	2.6 μmol/J	2.6μmol/J	2.5 μmol/J

Applications:

This lamp can be used as a primary or supplemental light source for almost any type of indoor growing.

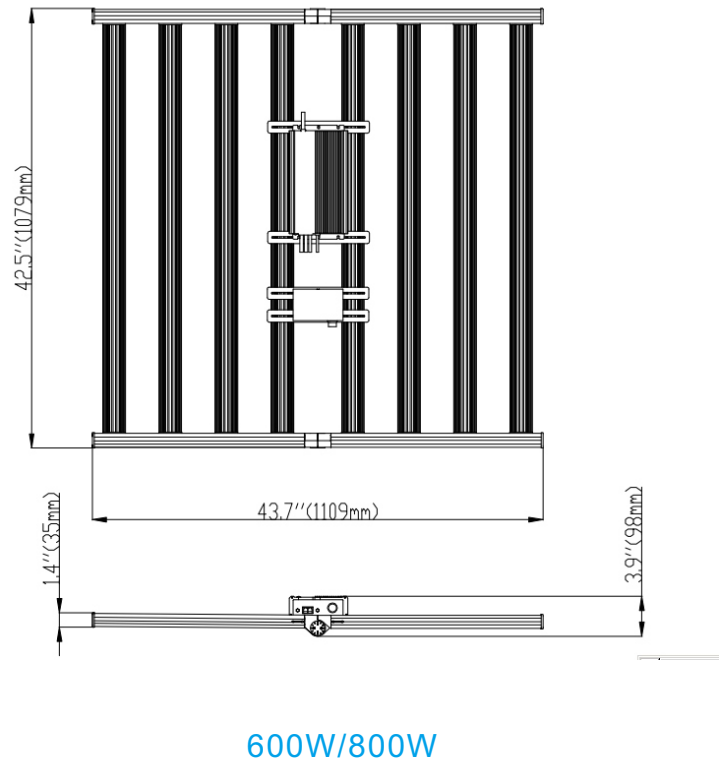
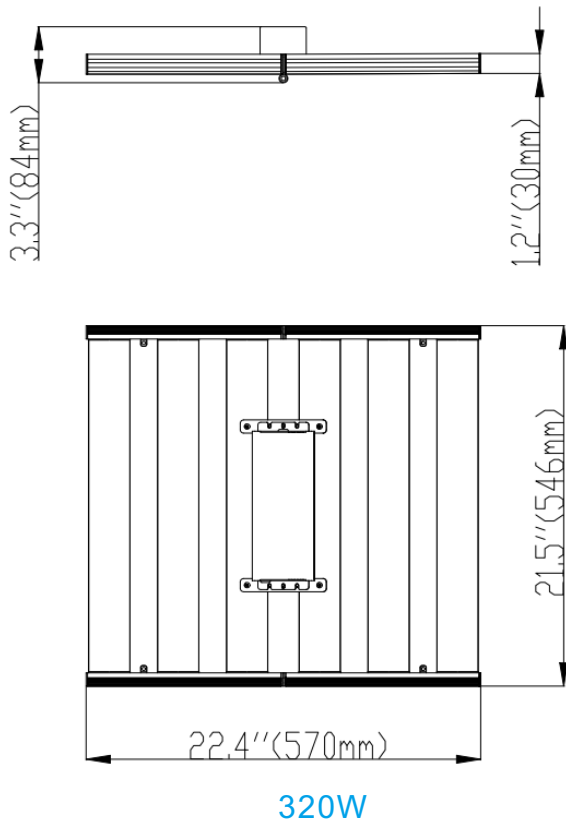
The light output has a very wide angle. It will provide the greatest benefit when mounted relatively close to the plants.



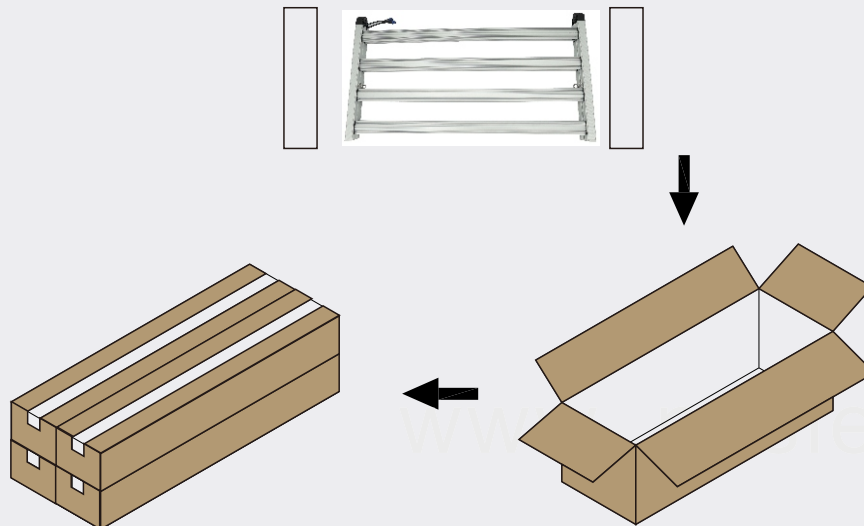


NEWSUNSHINE

www.nssled.com



Package



Model	Packaging unit (Pieces/Unit)	Dimensions	Gross weight	Volume
NSFO-GL320-D	Small box 1	58*34*13cm	5.6Kg	0.025m ³
	Outer Carton 4	59*35*53cm	23.5Kg	0.11m ³
NSFO-GL600-D	1	113*63*16cm	14.8Kg	0.11m ³
NSFO-GL800-D	1	113*63*16cm	14.8Kg	0.11m ³



Installation

Installation considerations

1. Open the package and check carefully the product, please handle it gently;
2. If there is a new product damaged, please keep it in good condition. The manufacturer should respond it in time;
3. Please do not use the damaged product.
4. Installation of products must be guided by a professional electrician;
5. Non-professionals are not allowed to disassemble and maintain. Our company has the right to refuse to provide maintenance services for products that have been repaired or replaced in private.
6. To ensure the normal operation of the product, please use the voltage marked on the lamps.
7. Please follow the correct installation steps to install the product.
8. Please turn off the lamp after installation to avoid the risk of electric shock.
9. The lamp body must be firmly installed, and the power cord must be insulated to prevent accidents.
10. The power cord must be waterproof.

Installation steps

1. Please disconnect the power supply before installation, the installation process is strictly prohibited to charged operation.
2. Tighten the rings/peg, put rings/peg in the hook, the smooth place, closed hook.
3. To ensure that the circuit has been disconnected, the blue line and the brown line is connected to the mains' L ' and ' N 'earth wire connected to GND, and doEdge processing, such as a plug, direct access to the switch.

